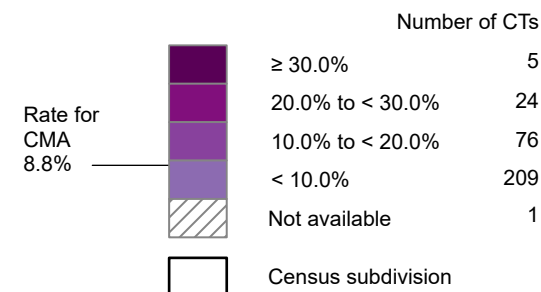
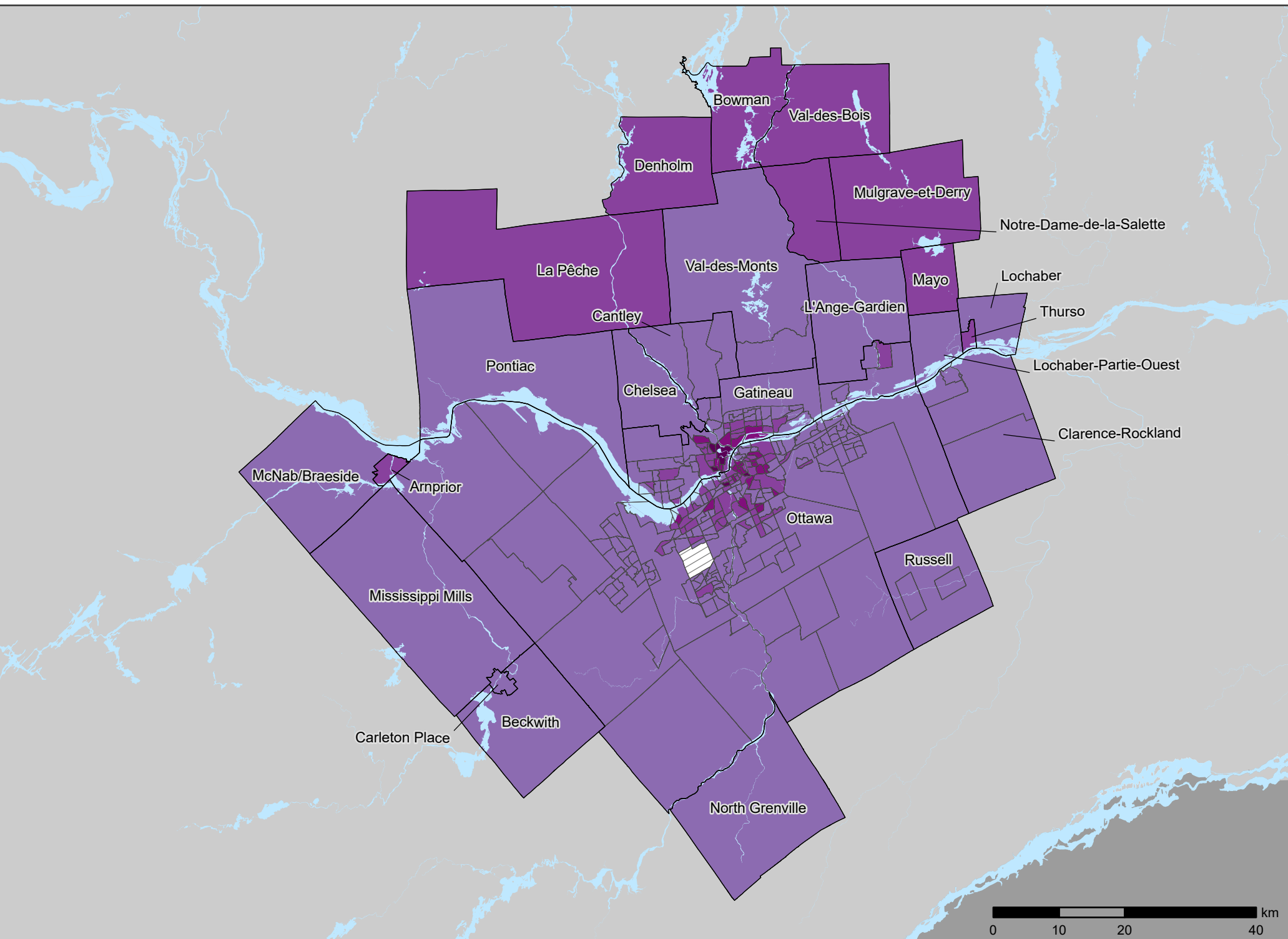


# Ottawa - Gatineau CMA

Percentage of the population below the after-tax low-income measure<sup>1</sup> in 2020, by 2021 census tract (CT)



1. For a one-person household, the after-tax low-income measure (LIM-AT) is \$26,503. For larger households, this amount is adjusted upward by multiplying it by the square root of household size.



Source: Statistics Canada, Census of Population, 2021.